



FS Club
News Events Partnerships



SMEs: The Key To Unlocking Net Zero In The Square Mile?

Maggie Berry OBE, Director, Heart of the City

Tuesday, 28 March 2023



A Word From Today's Chairman

Simon Mills
Senior Associate
Z/Yen Group





ABU DHABI
GLOBAL MARKET



CASABLANCA FINANCE CITY
القطب المالي للدار البيضاء



Platinum
Sponsors



LUXEMBOURG
FOR FINANCE



Global Times Consulting



SEOUL METROPOLITAN
GOVERNMENT



Busan
Finance
Center



Kigali
International
Financial
Centre

Gold
Sponsors



Aptitude
SOFTWARE



FEATURE
SPACE

OUTSMART RISK

ARBORETUM

Crown Agents
Bank



Silver
Sponsors



CLCLOUDSOFT



BCS CONSULTING

Expect Excellence



GPS
global processing services



IDA
Ireland
expert.ai

valcon



The Technium Global
SERVICE WITH INTEGRITY

afme/
Finance for Europe



Bronze
Sponsors



Profile
Software



ESTATES AND
INFRASTRUCTURE
EXCHANGE



www.udfspace.com



亞洲銀行

Contributor
Sponsors



Challenge
Curve



Catalina
Consulting



cuffassociates
PART OF THEBES GROUP

Volanté

TRANSPARENCY
TASK FORCE



CYGNETISE

AMSOM



GIBRALTAR
STOCK EXCHANGE

OCORIAN



Today's Agenda



- 10:00 – 10:05 Chairman's Introduction
- 10:05 – 10:25 Keynote Presentation – Maggie Berry OBE
- 10:25 – 10:45 Question & Answer



Today's Speaker

Maggie Berry OBE
Director
Heart of the City



Heart of the City

SMEs: The Key To Unlocking Net Zero In The Square Mile?

28 March 2023



Presented by Maggie Berry OBE

Every business can be a force for good

@HOTC_UK

#GoodBusiness

Who we are

Heart of the City is a charity that helps SMEs make responsible business a meaningful part of their work

We were established by the City of London Corporation, the Bank of England and the then Financial Services Authority

We have over 20 years experience and have helped 1,000+ businesses across London make a positive impact by better supporting their people, places and the planet



Every business can be a force for good

@HOTC_UK

#GoodBusiness

Our programmes

Climate for SMEs: 4 Steps to Action

This programme helps SMEs to get started on a journey to net zero. Sustainability professionals help people to understand the basics, build the business case, measure their carbon footprint and make a net zero action plan

Foundations for Responsible Business

This programme supports SMEs to develop a responsible business approach, focused on people, environment and community. Workshops and guidance from experts in all areas of CSR coach businesses to do well by doing good.

theheartofthecity.com/programmes



Every business can be a force for good

@HOTC_UK

#GoodBusiness

The imperative to support SMEs

- SMEs account for 99% of the UK business population
- 5.5 million small businesses in the UK at the start of 2021
- SMEs account for 60% of the employment and c50% of turnover in the UK private sector
- Supply chain emissions are 11.4 times higher than operational emissions
- 76% of SMEs are yet to implement decarbonisation strategies



Every business can be a force for good

@HOTC_UK

#GoodBusiness

The City's Climate Action Strategy

By adopting this strategy, the City of London Corporation has committed to:

- Achieve net zero carbon emissions from their operations by 2027
- Achieve net zero carbon emissions across their investments and supply chain by 2040
- **Support the achievement of net zero for the Square Mile by 2040**
- Invest £68m over the next six years to support these goals of which £15m is dedicated to preparing the Square Mile for extreme weather events



Every business can be a force for good

@HOTC_UK

#GoodBusiness

Climate for SMEs: 4 steps to action

Funded by the Climate Action Strategy, we have developed this course to help SMEs get started on their journeys to net zero - delivered through workshops, masterclasses, online resources and expert mentoring

Module 1

Jargon busting and demystification

Module 2

Building the business case

Module 3

Measuring your carbon footprint

Module 4

Net zero action plan and next steps

The course runs over 8 to 12 months depending on business needs; time commitment is on average one hour per week, scheduled to fit around availability

Eligibility

Fully funded places on the **Climate for SMEs** course are available to:

- SMEs based in the Square Mile
- SMEs with more than 50% of their operations in the Square Mile
- SME suppliers to the Corporation (including tier 2 suppliers on the City's Major Projects)
- SME tenants of the Corporation (in any building)
- Charities, livery companies and social enterprises in the Square Mile

Climate Action Toolkit

Available for free online: theheartofthecity.com/climate

Includes over 40 different resources to support SMEs on their journey to net zero

STEP 1 CLIMATE ACTION: TIME TO GET STARTED MODULE ONE	STEP 2 CLIMATE CHANGE 101 MODULE ONE	STEP 3 JARGON BUSTING CLIMATE ACTION TERMS MODULE ONE
STEP 4 WHAT MAKES UP YOUR CARBON FOOTPRINT? MODULE ONE	STEP 5 CARBON EQUIVALENCIES MODULE ONE	STEP 6 PLANNING YOUR CARBON JOURNEY MODULE ONE
STEP 7 BRINGING PEOPLE ON YOUR CARBON JOURNEY MODULE ONE	STEP 8 THE REGULATORY AND REPORTING LANDSCAPE MODULE ONE	STEP 9 BEALE & CO: A CARBON NEUTRAL PLEDGE MODULE ONE
STEP 10 SHED 1 DISTILLERY: CLIMATE POSITIVE PROCESSES MODULE ONE	STEP 11 SAPPHIRE SYSTEMS: A CARBON NEUTRAL BUSINESS MODULE ONE	STEP 12 THE BERKELEY PARTNERSHIP MODULE ONE


CLIMATE ACTION: TIME TO GET STARTED


Module one

SHARE [f](#) [p](#) [in](#) [t](#)

IN THIS VIDEO, WE'RE TALKING ABOUT THE BUSINESS CASE FOR CLIMATE ACTION.

We hear from Heart of the City Co-President William Russell, the Lord Mayor of the City of London, Planet Mark Founder Steve Malkin, and Heart of the City Membership Manager Laura McCullough:



Watch on  YouTube

This was last updated in September 2021 by Heart of the City.

Climate for SMEs: 4 Steps to Action is funded by the City of London Corporation in support of its Climate Action Strategy targets for a net zero and resilient Square Mile.

CARBON EQUIVALENCIES

Module one

SHARE [f](#) [p](#) [in](#) [t](#)

WE'RE ALL TALKING ABOUT MEASURING AND REDUCING CARBON EMISSIONS AND THINKING ABOUT TONNES OF CARBON. CURRENTLY, THE AVERAGE CARBON EMISSION PER YEAR FOR SOMEONE LIVING IN THE UK IS 12.7 TONNES - BUT WHAT DOES THAT REALLY LOOK LIKE? TO HELP VISUALISE THE AMOUNT OF GREENHOUSE GAS YOU'RE WORKING WITH, WE'VE SHARED SOME RELATIVE EQUIVALENCIES.

One tonne of CO2 is equivalent to:

- The average emission of one passenger on a return flight from Paris to New York
- Driving from London to Edinburgh over 10 times
- Having your heating on full blast for 80 days straight
- Eating over 1,000 beef steaks or 4,100 wheels of camembert

12.7 tonnes weighs the same as:

- 18 dairy cows
- 10,500 bottles of wine
- 25 million plastic straws

And to deadlift that weight you'd need 25.5 Eddie Halls (the world's strongest man, who lifts 500kg!)

Your company's impact

Some interesting facts you might not have considered:

- A one-hour HD video call between two people in London, on PCs over wifi ~ 1km travelled by car or 10km by train.
- The carbon footprint of manufacturing a smartphone can be up to as much as 95kg - and that's just producing it, not the emissions of using it. How many mobiles are in use in your business? Have a go at working out an equivalent for

Grosvenor Net Zero Mentoring Programme

Supporting SME suppliers to set a science based target

The core of the programme will be five online workshops:

The business case for net zero and committing to a science-based target

Science-based targets - what they are and why they're important

**Tuesday 29 March
10-11:30am**

Calculating your baseline

What to measure, 'how to' guidance and calculators

**Thursday 28 April
10-11:30am**

Setting your action plan: roadmaps and targets

Action plan guidance and tips for making reductions

**Wednesday 13 July
10-11:30am**

Achieving validated science-based targets

How to gain validation and to publicly report

**Tuesday 13 September
2-3:30pm**

Offsetting

Credible offsetting options and best practice

**Wednesday 19 October
2-3:30pm**

There will also be regular clinic sessions, during which you will have the opportunity to ask questions of the Heart of the City team and Grosvenor experts.

By joining the programme your company is making a commitment to participate in the five workshops, regularly participate in the clinics, measure your carbon footprint and set a science-based target by November 2022.

Please note that there is a one-time target validation fee of \$1,000 USD (+ applicable VAT) which will need to be paid by participating SMEs to the Science Based Targets initiative (SBTi). For SBTi purposes, SMEs are defined as "a non-subsidiary, independent company which employs fewer than 500 employees".



Programme impact

- 39 suppliers took part - representing 33% of Grosvenor's spend
- 82% of suppliers measured their carbon footprint
- 74% of suppliers have submitted Science Based Targets
- 65,000 tonnes of carbon will be eliminated by 2030 – equivalent to heating 26,000 UK homes a year
- The programme has increased the number of UK-based SMEs with a Science Based Target by 20%



Every business can be a force for good

@HOTC_UK

#GoodBusiness

Top tip 1: Carbon reduction

In your physical environment:

- Your equipment
- Recycling
- Consolidated deliveries
- Energy efficient technology
- LED lighting
- Heating
- Green energy supplier

In your online environment:

- Email emissions
- Video calling
- Eco search engine
- Energy saving modes



Every business can be a force for good

@HOTC_UK

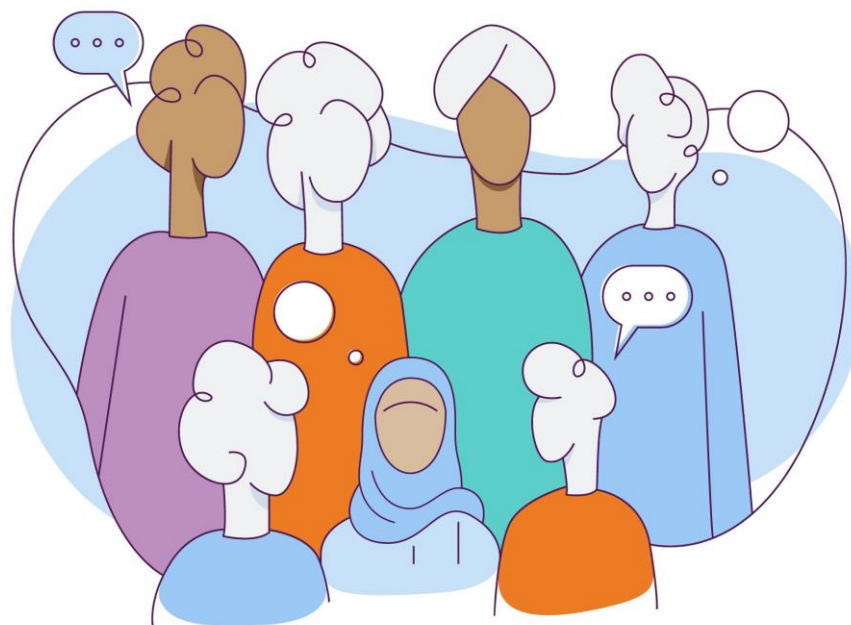
#GoodBusiness

Top tip 2: Engagement

Map and engage your stakeholders:

Who can influence?

Who will take part and what's their motivation?



Who needs to know?

Who can help you gather data?

Who are your champions?



Every business can be a force for good

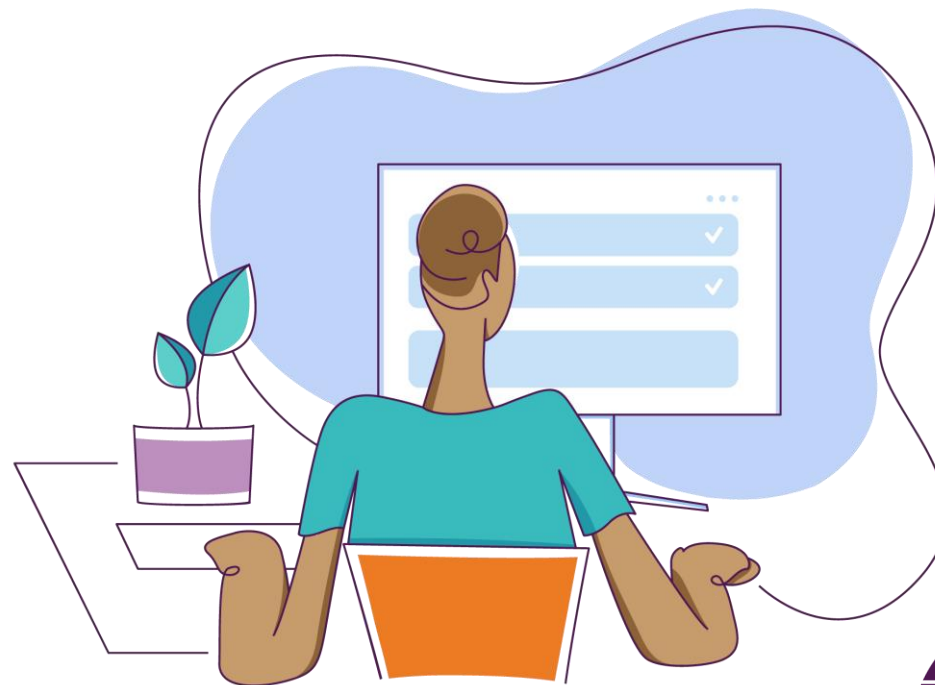
@HOTC_UK

#GoodBusiness

Top tip 3: Data collection

Conduct an audit of your workplace including:

- Central heating
- Cooling systems
- Lighting
- Vehicles
- Electricity / gas
- Employee commuting



Every business can be a force for good

@HOTC_UK

#GoodBusiness

Top tip 4: Your net zero strategy

Get together with your key stakeholders and senior leaders

- Ambition; budget; ownership; governance
- Start with what you control / influence
- Tell people about it!
- Plan your actions
- Short, medium and the long term
- Consider offsetting your emissions



Every business can be a force for good

@HOTC_UK

#GoodBusiness

Opportunities to support SMEs

- Help us to promote the free places on Climate for SMEs – sign up if you're eligible
- Share our free climate action toolkit – with SMEs everywhere!
- Sponsor places for your SMEs onto Heart of the City programmes
- Provide a one off training event
- Host a workshop series or mentoring programme
- Develop bespoke activity to best support your SME community



Every business can be a force for good @HOTC_UK #GoodBusiness

Our programmes

Foundations for Responsible Business

This programme supports SMEs to develop a responsible business approach, focused on people, environment and community. Workshops and guidance from experts in all areas of CSR coach businesses to do well by doing good.

[More information](#)

Registration available for fully funded places until June 2023 for SMEs in: Camden, Hackney, Islington, Lambeth and Southwark



Every business can be a force for good

@HOTC_UK

#GoodBusiness

Interested to find out more?

Contact Maggie Berry OBE, Director:

maggie@theheartofthecity.com

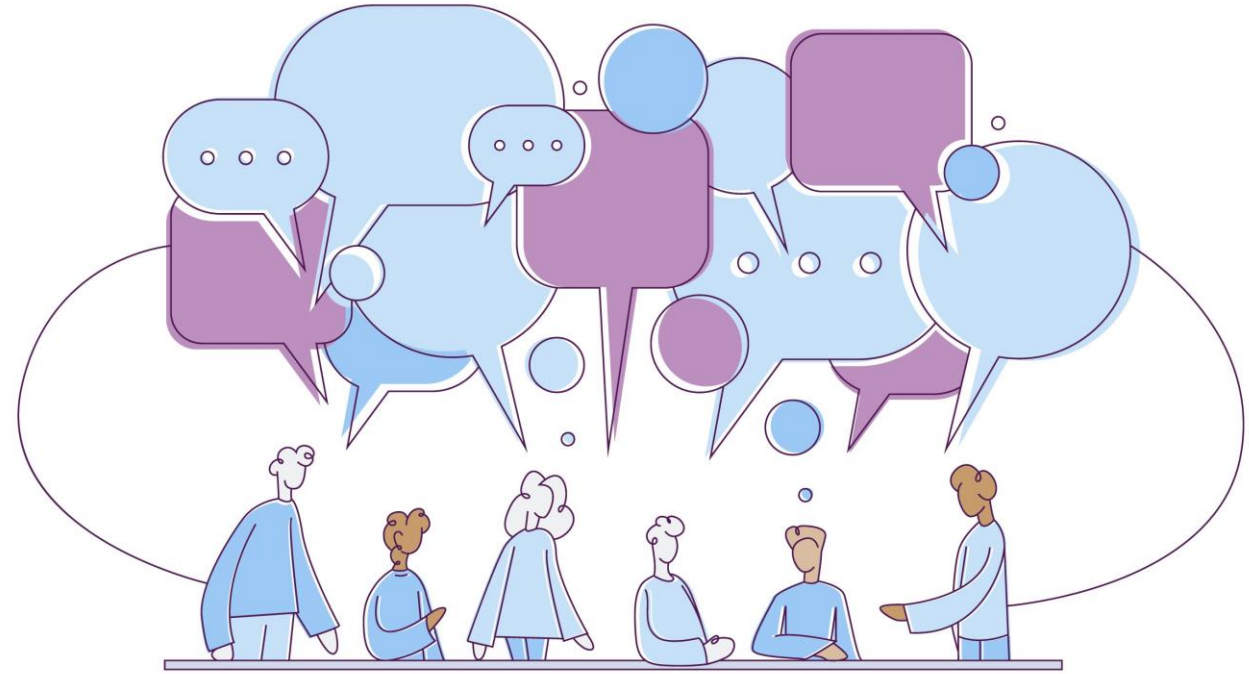
07876 038 267

Access our climate action toolkit:

theheartofthecity.com/climate

Sign up for our events:

theheartofthecity.com/events



Every business can be a force for good

@HOTC_UK

#GoodBusiness



Comments, Questions & Answers



横浜市営地下鉄

ブルーライン

Blue Line Subway



観光案内所

Question & Answer

问讯处 詢問處 안내소

西口

West Exit

西出口 서쪽



ABU DHABI
GLOBAL MARKET



CASABLANCA FINANCE CITY
القطب المالي للدار البيضاء



Platinum
Sponsors



LUXEMBOURG
FOR FINANCE



Global Times Consulting



SEOUL METROPOLITAN
GOVERNMENT



Busan
Finance
Center



Kigali
International
Financial
Centre

Gold
Sponsors



Aptitude
SOFTWARE



FEATURE
SPACE

OUTSMART RISK

ARBORETUM

Crown Agents
Bank



Silver
Sponsors



CLCLOUDSOFT



BCS CONSULTING

Expect Excellence



GPS
global processing services



IDA
Ireland
expert.ai

valcon



The Technium Global
SERVICE WITH INTEGRITY

afme /
Finance for Europe



Bronze
Sponsors



Profile
Software



www.udfspace.com



亞洲銀行

Contributor
Sponsors



Challenge
Curve



Catalina
Consulting



cuffassociates
PART OF THEBES GROUP

Volanté

TRANSPARENCY
TASK FORCE



AMSOM



GIBRALTAR
STOCK EXCHANGE

OCORIAN



Thank You For Participating



Forthcoming Events

- Wed, 29 Mar (11:00-11:45) Transform, Don't Optimise: How Can A History Based Theory Of Change Power Radical Reinvention Of Investment Philosophy & Practice?
- Thu, 30 Mar (13:30-17:30) ESOP British Isles Share Plan Symposium 2023
- Mon, 03 Apr (15:00-15:45) AI & The Law - Can The Law Keep Up With The Rapid Expansion Of AI Capabilities & Deployments?
- Tue, 04 Apr (10:00-10:45) The Illusion Of Control: Why Financial Crises Happen, & What We Can (& Can't) Do About It

Visit <https://fsclub.zyen.com/events/forthcoming-events/>

Watch past webinars <https://www.youtube.com/zyengroup>