

Working Upstream Of Crisis

Professor Sir David Omand GCB, Visiting Professor in the Department of War Studies, King's College London

Wednesday, 22 March 2023



A Word From Today's Chairman

Professor Michael Mainelli

Chairman
Z/Yen Group





ABU DHABI
GLOBAL MARKET



CASABLANCA FINANCE CITY
القطب المالي للدار البيضاء



Platinum
Sponsors



LUXEMBOURG
FOR FINANCE



Global Times Consulting



SEOUL METROPOLITAN
GOVERNMENT



Busan
Finance
Center



Kigali
International
Financial
Centre

Gold
Sponsors



Aptitude
SOFTWARE



FEATURE
SPACE

OUTSMART RISK

ARBORETUM

Crown Agents
Bank



Silver
Sponsors



CLCLOUDSOFT



BCS CONSULTING



GFT



Expect Excellence
GPS
global processing services



IDA
Ireland
expert.ai

valcon



The Technium Global
SERVICE WITH INTEGRITY

afme/
Finance for Europe



Bronze
Sponsors



Profile
Software



CONTACT
PARTNERS



alyne



ESTATES AND
INFRASTRUCTURE
EXCHANGE



www.udfspace.com



亞洲銀行

Contributor
Sponsors



Challenge
Curve



Currencycloud



worldpay



mastercard

Catalina
Consulting



cuffassociates
PART OF THEBES GROUP

Volanté



TRANSPARENCY
TASK FORCE



CYGNETISE

AMSOM



GIBRALTAR
STOCK EXCHANGE

OCORIAN



Today's Agenda

- 16:00 – 16:05 Chairman's Introduction
- 16:05 – 16:25 Keynote Presentation – Sir David Omand GCB
- 16:25 – 16:45 Question & Answer



Today's Speaker

Professor Sir David Omand GCB

Visiting Professor in the
Department of War Studies
King's College London





Professor Sir David Omand GCB


- Visiting Professor in the Department of War Studies, King's College London

Former:

- UK Security and Intelligence Coordinator in the Cabinet Office
- Permanent Secretary of the Home Office
- Director of the Government Communications Headquarters (GCHQ)
- Deputy Under-Secretary of State for Policy in the Ministry of Defence
- Seven years as a member of the Joint Intelligence Committee (JIC)

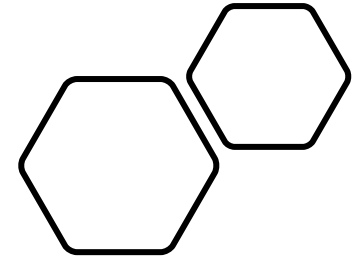


Former Director of GCHQ
DAVID OMAND



How to Survive a Crisis

Lessons in Resilience and
Avoiding Catastrophe





To which one of the following potential 'slow burn' crises would you most want the government to give priority?

- Growing income inequality in the UK
- The long-term state of the NHS
- A US/China Cold War
- Readiness for the next serious pandemic
- Extreme weather events affecting the UK

David Omand

Former Director of GCHQ

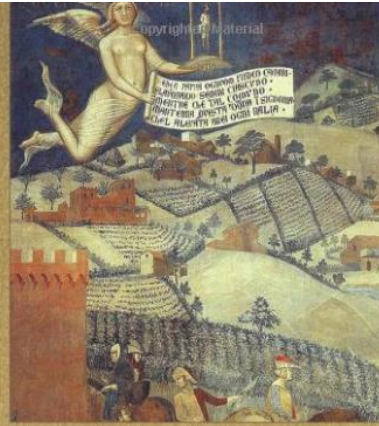


HOW U G M U D V S P X U V L W H V S P I E S Y P H S G L H L J M H T H I N K B

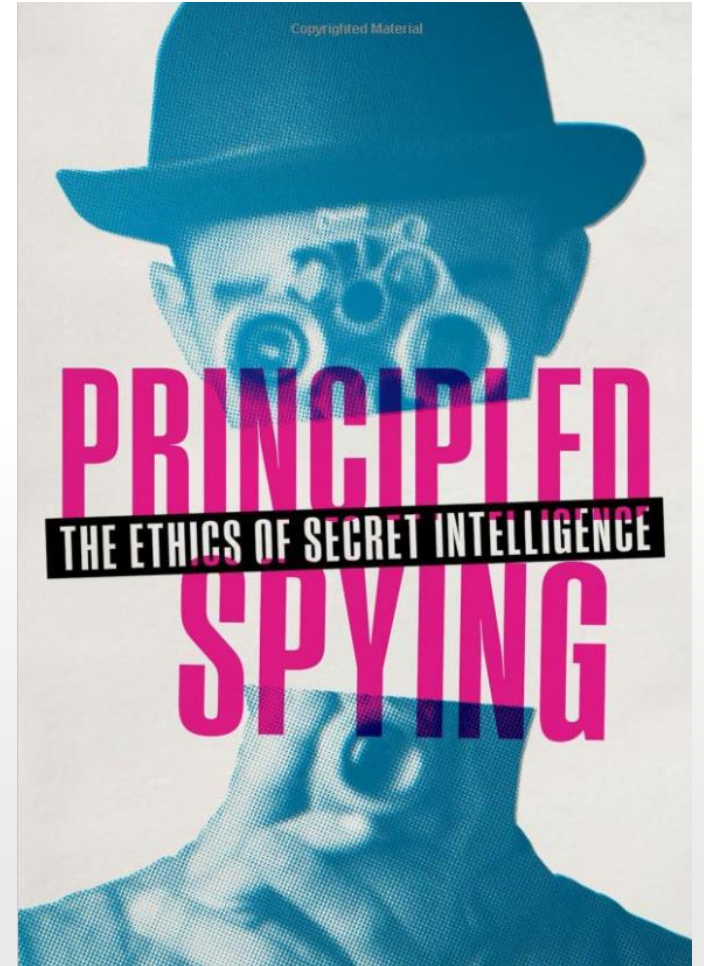
Ten Lessons in Intelligence

'Brilliant, lucid and thought-provoking'

Christopher Andrew, author of *The Defence of the Realm*



DAVID OMAND SECURING THE STATE





If as a result of a hostile cyber attack you found tomorrow all your data on home devices (computers, laptops, mobiles) permanently unavailable, would the effect be?

- Manageable (for example since you have data securely backed up in the Cloud)
- Disruptive to your life over the next few weeks
- Highly disruptive to normal life
- Catastrophic in its effect



Comments, Questions & Answers



横浜市営地下鉄

有楽町線

Yamanote Line Subway



観光案内所

Question & Answer

问讯处 詢問處 안내소

西口

West Exit

西出口 서쪽



ABU DHABI
GLOBAL MARKET



CASABLANCA FINANCE CITY
القطب المالي للدار البيضاء



Platinum
Sponsors



LUXEMBOURG
FOR FINANCE



Global Times Consulting



SEOUL METROPOLITAN
GOVERNMENT



Busan
Finance
Center



Kigali
International
Financial
Centre

Gold
Sponsors



Aptitude
SOFTWARE



FEATURE
SPACE

OUTSMART RISK

ARBORETUM

Crown Agents
Bank



Silver
Sponsors



CLCLOUDSOFT



BCS CONSULTING



GFT



Expect Excellence
GPS
global processing services



IDA
Ireland
expert.ai

valcon



The Technium Global
SERVICE WITH INTEGRITY

afme /
Finance for Europe



Bronze
Sponsors



Profile
Software



alyne



ESTATES AND
INFRASTRUCTURE
EXCHANGE



www.udfspace.com



亞洲銀行

Contributor
Sponsors



Challenge
Curve



Currencycloud



mastercard
Catalina
Consulting



cuffassociates
PART OF THEBES GROUP

Volanté

TRANSPARENCY
TASK FORCE



CYGNETISE

AMSOM



GIBRALTAR
STOCK EXCHANGE

OCORIAN



Thank You For Participating



Forthcoming Events

- Thu, 23 Mar (09:00-09:45) Launch Of Global Financial Centres Index 33
- Tue, 28 Mar (10:00-10:45) SMEs: The Key To Unlocking Net Zero In The Square Mile?
- Wed, 29 Mar (11:00-11:45) Transform, Don't Optimise: How Can A History Based Theory Of Change Power Radical Reinvention Of Investment Philosophy & Practice?
- Thu, 30 Mar (13:30-17:30) ESOP British Isles Share Plan Symposium 2023

Visit <https://fsclub.zyen.com/events/forthcoming-events/>

Watch past webinars <https://www.youtube.com/zyengroup>